

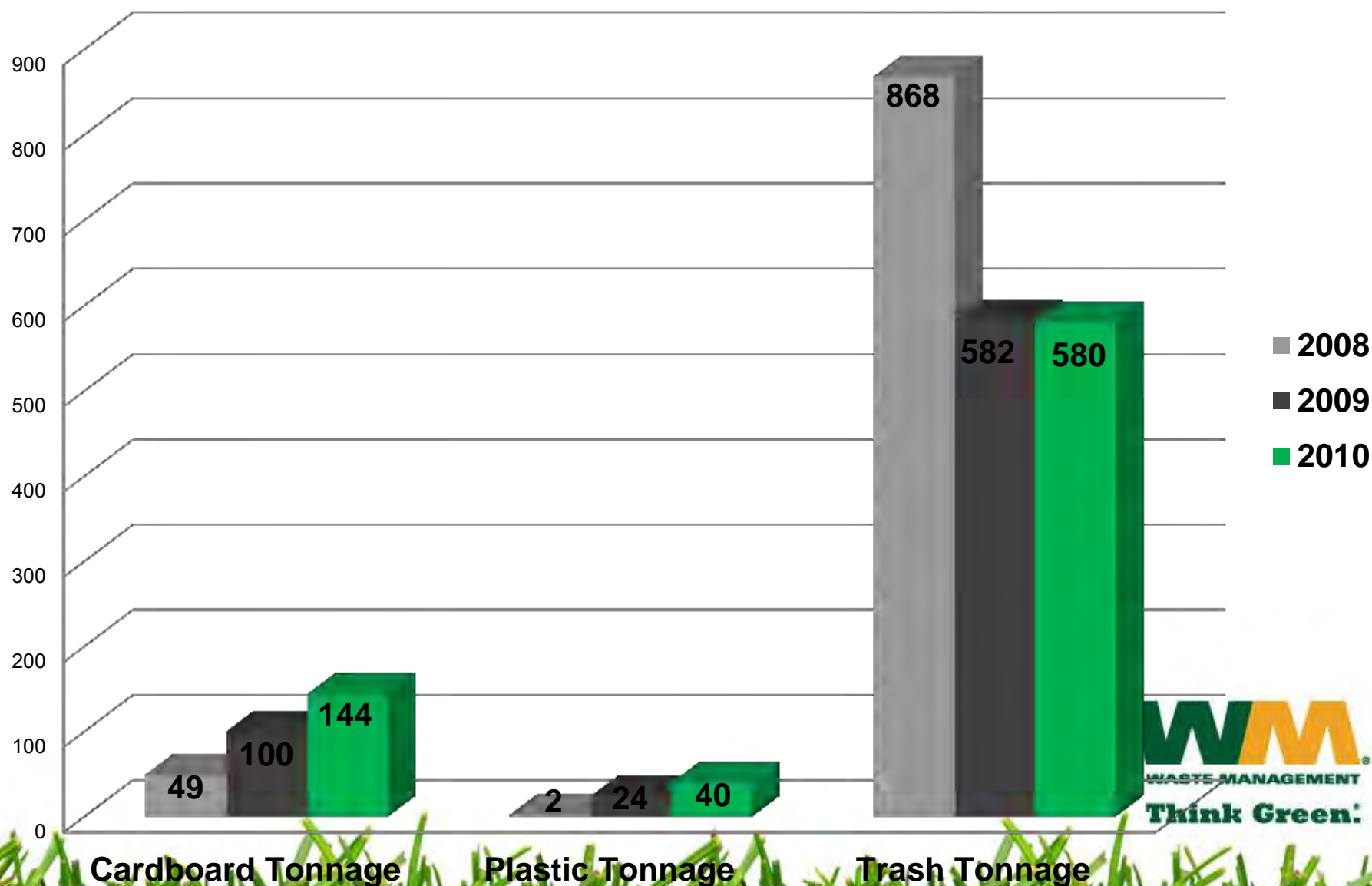


Recycling Highlights

2008 - Present



2008 to Present: Increase in Cardboard/Plastic Recycling Leading to Trash Reduction Through Efforts of WM Programs



Timeline

- Allison has had cardboard and plastic recycling program in effect for several years.
- Current WM program launch October 2008 with WM labor added to collect, transport, and bale cardboard in addition to managing trash and metal chips at Allison Main Campus (Plts 4, 6, 12, & 14).
- WM program identified more collection opportunities facility - wide for cardboard and plastics as well other recyclables through trash audits.



Timeline

- February 2009 – expanded plastic recycling started with a pilot in plant 4 and 6 to collect sheeting/film/wrap off the assembly line.
- March 2009 - plastic sheeting/film/wrap recycling was fully implemented in strategic areas of plant 4 and 6, mostly assembly.
- June 2009 – pilot for plastic recycling (all types – caps, trays, sheeting/film/wrap in plant 12 assembly.
- June 2009 – moved forward with all types of plastic in plant 4 and 6 assembly following plant 12 assembly pilot model. Plant 12 assembly fully implemented.



How do we do it?

- We get close to the source utilizing wire rack/bag method to make recycling more convenient in assembly areas.
- Continually audit trash gondolas to find out if there are any more areas near trash gondolas to place plastic or cardboard containers.
- Safely removing items from the trash prior to dumping into compactor (last line of defense) if needed.
- Make sure all break areas and offices have recycling containers for soda bottles and aluminum cans.
- Educate the floor about recycling...many employees (not just supervision) come to us instead of us to them now.



How do we do it?



Plastic, Cardboard, Trash



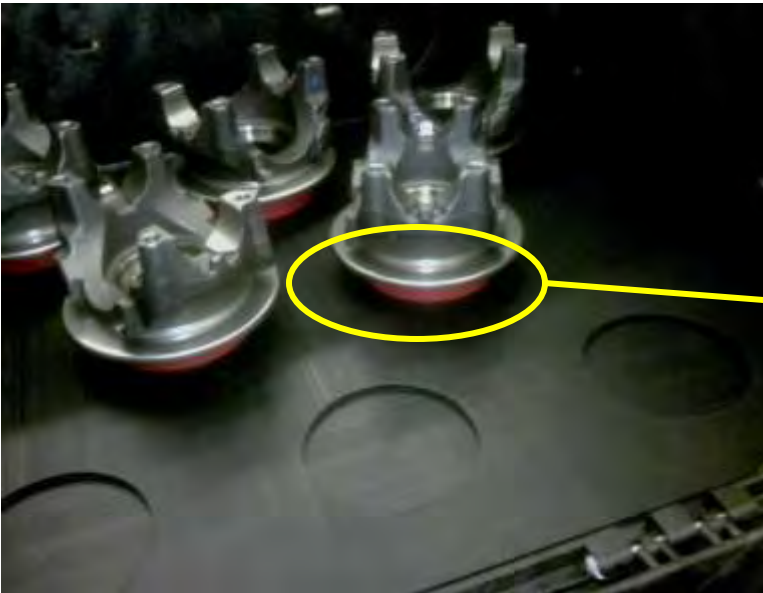
How do we do it?



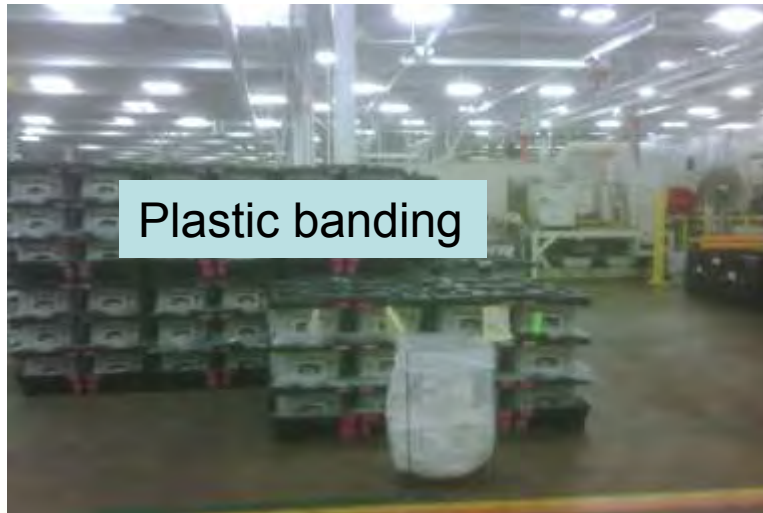
WM
WASTE MANAGEMENT
Think Green.

How do we do it?

Assembly Areas



How do we do it?



How do we do it?



Aluminum Foil and Rivets

How do we do it?



Smaller rack and roll – Sibley Labs containers used in assembly areas close to source for caps, foil, sheeting.



How do we do it?



Container used to collect packaging foam sheets to send to ATI's Parts Distribution Warehouse for reuse.

